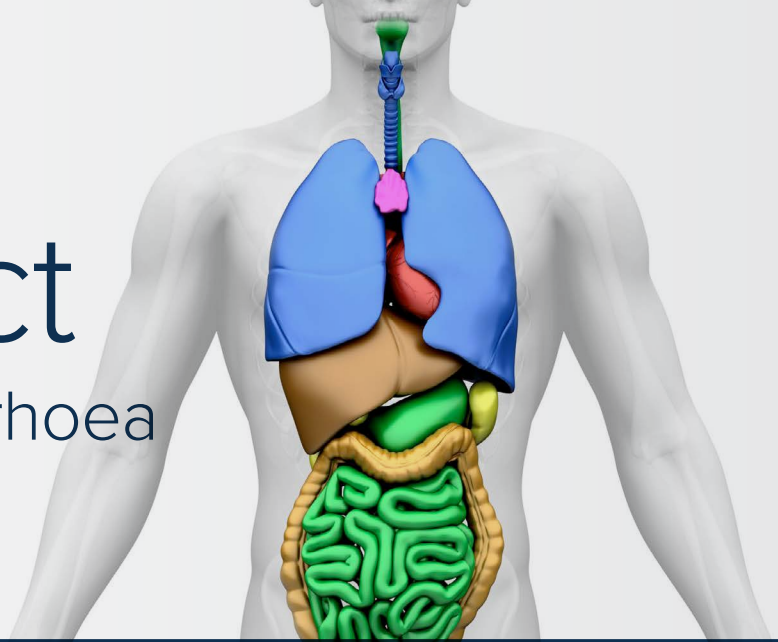


## GP EDUCATION

# The GI tract

from dysphagia to diarrhoea

how to diagnose, how to treat



**It's easy to register**

[www.strathfieldprivate.com.au](http://www.strathfieldprivate.com.au)



**Wednesday 8 May 2024**

RSVP Thursday 2 May 2024



Concord Golf Club  
190 Majors Bay Road  
Concord NSW 2137



[ArthurJ@ramsayhealth.com.au](mailto:ArthurJ@ramsayhealth.com.au)  
0411 171 003

### PROGRAM

**6.30pm** Registration and Dinner

**7.30pm** Presentations and discussion

**Upper and lower GI Symptoms and diagnosis**

Dr Mayenaaz Sidhu, *Gastroenterologist*

**Swallowing/dysphagia & diarrhoea and when to refer**

Dr Mark Bonnicksen, *Gastroenterologist*

**Fatty fatty liver (MASLD)**

Dr Karen Waller, *Gastroenterologist*

**8.30pm** Evaluation and close

### LEARNING OUTCOMES

- Describe how to investigate someone with dysphagia
- Outline initial management of diarrhoea, investigations and when to refer.

Proudly sponsored by



Email if you wish to be removed from our mailing list

